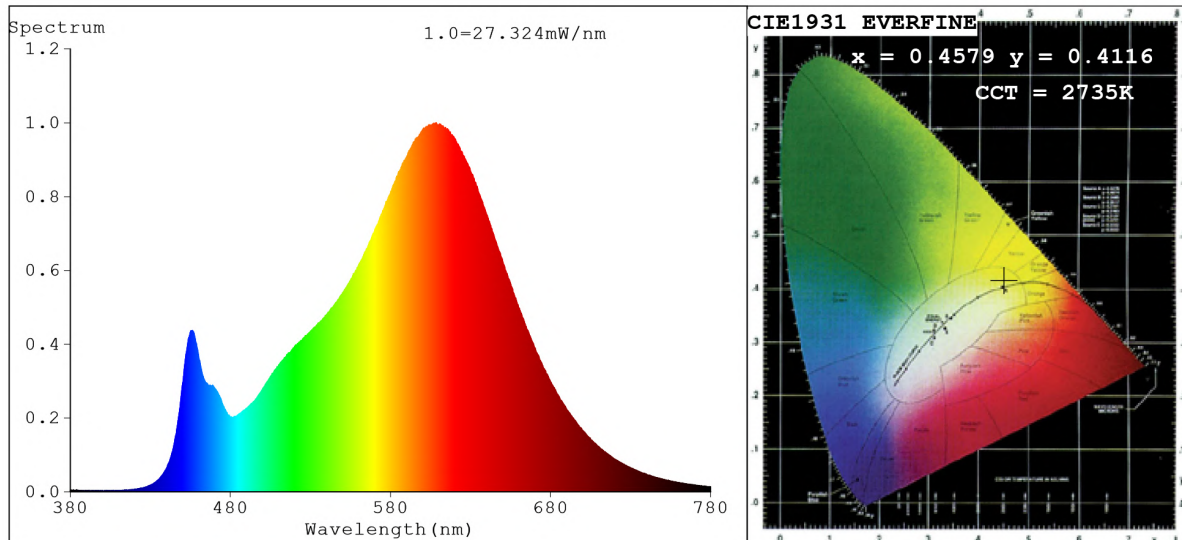


## Spectrum Test Report



### Color Parameters:

Chromaticity Coordinate:  $x=0.4579$   $y=0.4116$   $u'=0.2608$   $v'=0.5274$   
 CCT=2735K (Duv=0.0005) Dominant WL:Ld =583.9nm Purity=61.0%  
 Ratio:R=25.1% G=72.3% B=2.6%; Peak WL:Lp=608.5nm FWHM=116.8nm  
 Render Index:Ra=83.5 CRI=79.0 TM30:Rf=82 Rg=94 Lav=596.0nm  
 R1 =83 R2 =94 R3 =94 R4 =80 R5 =83 R6 =94 R7 =81  
 R8 =59 R9 =13 R10=86 R11=80 R12=75 R13=86 R14=97 R15=75

### Photo Parameters:

Flux = 1247 lm Eff. : 124.26 lm/W Fe = 3.866 W Scotopic:1577.2 S/P:1.2647

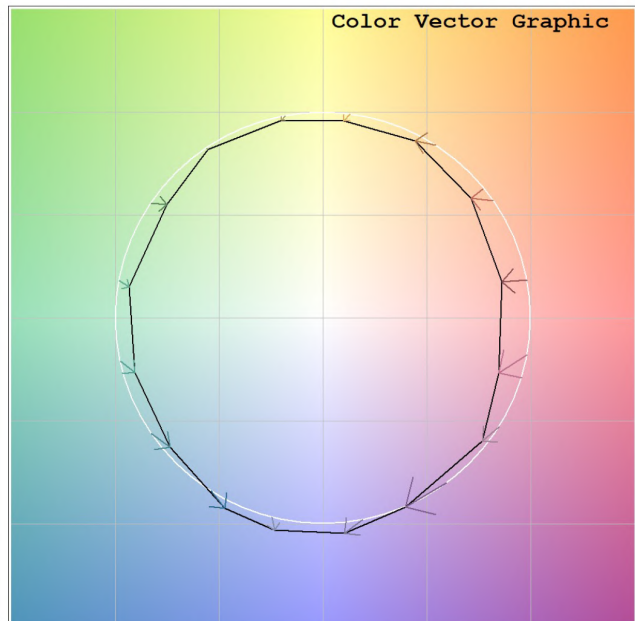
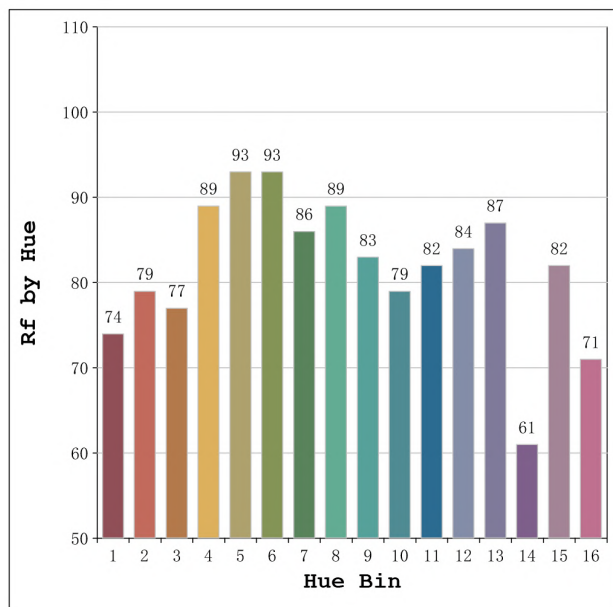
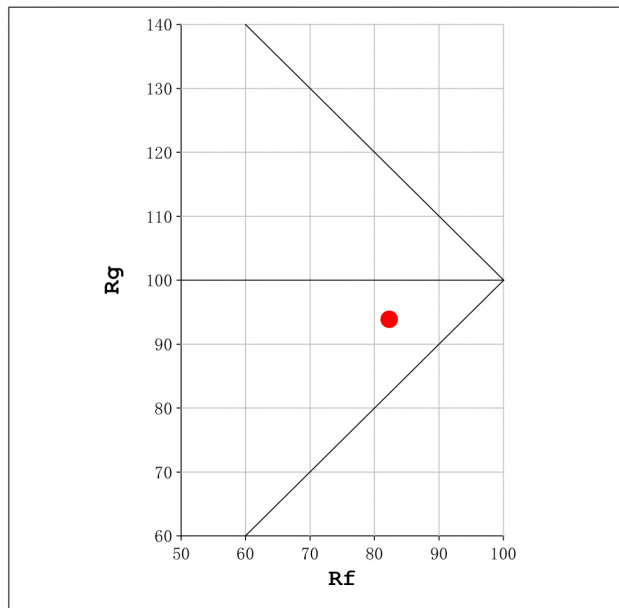
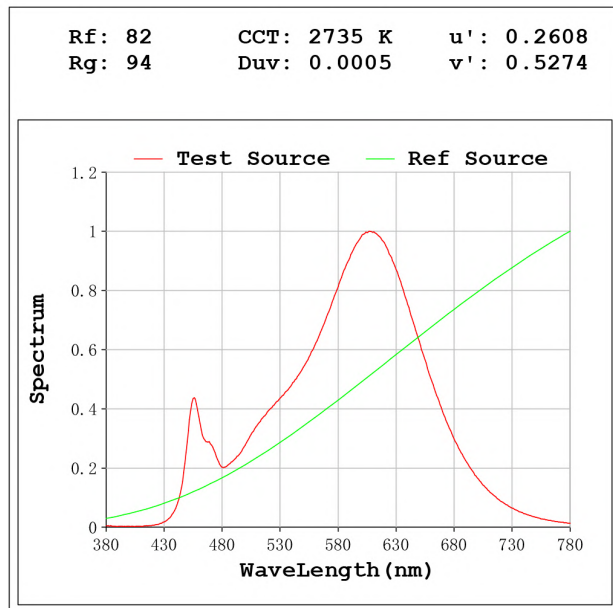
### Electrical parameters:

V = 23.998 V I = 0.4182 A P = 10.04 W PF = 1.000

Status: Integral T = 961 ms Ip = 52346 (80%)

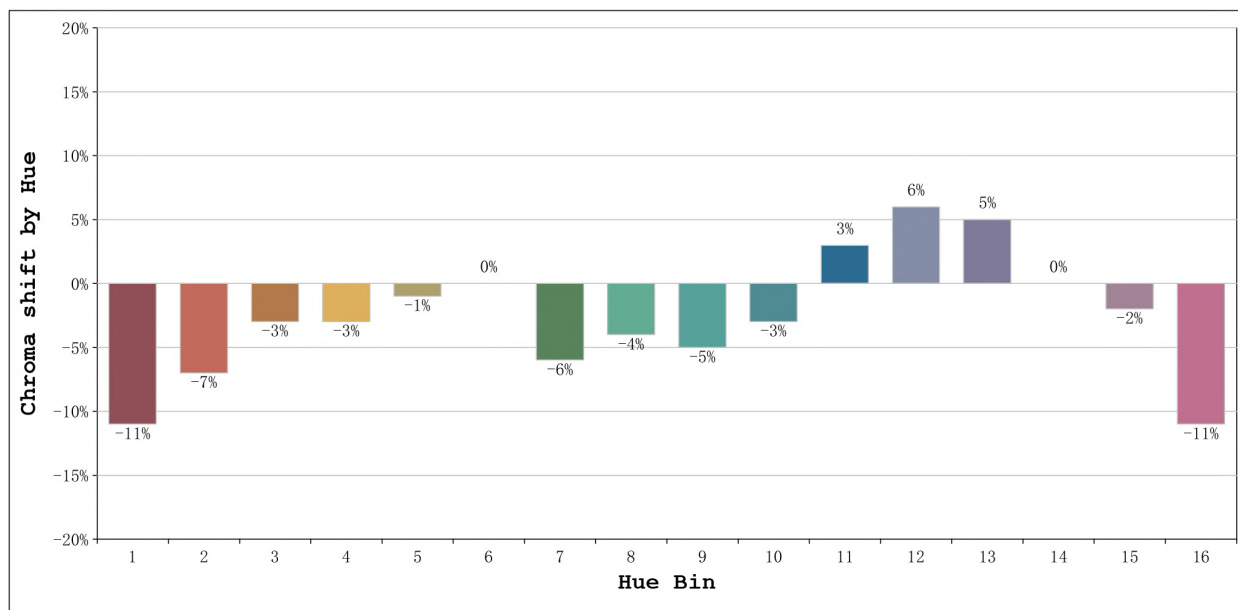
Model:Ecoled Élite 10 2700K  
 Tester:Sergio Carneros  
 Temperature:27Deg  
 Manufacturer:Luz Negra

Number: 31.155  
 Date:2023-06-02 08:02:42  
 Humidity:35%  
 Remarks:100cm de tira flexible



Model:Ecoled Élite 10 2700K  
 Tester:Sergio Carneros  
 Temperature:27Deg  
 Manufacturer:Luz Negra

Number: 31.155  
 Date:2023-06-02 08:02:42  
 Humidity:35%  
 Remarks:100cm de tira flexible



			Graphic shift(%)	
Hue Bin	Hue Angle	Rf	Chroma	Hue
1	0.0° - 22.5°	74	-11	2
2	22.5° - 45.0°	79	-7	7
3	45.0° - 67.5°	77	-3	9
4	67.5° - 90.0°	89	-3	2
5	90.0° - 112.5°	93	-1	2
6	112.5° - 135.0°	93	0	0
7	135.0° - 157.5°	86	-6	-3
8	157.5° - 180.0°	89	-4	2
9	180.0° - 202.5°	83	-5	7
10	202.5° - 225.0°	79	-3	11
11	225.0° - 247.5°	82	3	10
12	247.5° - 270.0°	84	6	2
13	270.0° - 292.5°	87	5	-9
14	292.5° - 315.0°	61	0	-22
15	315.0° - 337.5°	82	-2	-9
16	337.5° - 360.0°	71	-11	-10

Model:Ecoled Élite 10 2700K  
 Tester:Sergio Carneros  
 Temperature:27Deg  
 Manufacturer:Luz Negra

Number: 31.155  
 Date:2023-06-02 08:02:42  
 Humidity:35%  
 Remarks:100cm de tira flexible